

# STATUS SCIENTIFIC CONTROLS

- Refrigerant Identifiers •
- Fixed Gas Detectors • Gas Detection Control Units •




## Mentor Bluetooth Application Setup Manual

Mentor Bluetooth Application

×

Console	Control
Date: 17/01/2020 Time: 13:31:51 Op: A ID: --- R1234yf: 0.0 R134a: 0.0 R22: 0.0 HC: 0.0 Air: 60.6 Refrigerant: R1234yf Result: SAE Standard Awaiting Connection...	<p>Start</p> <p>Save</p> <p>Print</p>

MAC - 001986003D2D



### Status Scientific Controls Ltd

Hermitage Lane Industrial Estate  
Mansfield, Nottinghamshire NG18 5ER  
United Kingdom

Tel: +44 (0) 1623 651381

[www.status-scientific.com](http://www.status-scientific.com)

email: [sales@status-scientific.com](mailto:sales@status-scientific.com)

# STATUS SCIENTIFIC CONTROLS



- Refrigerant Identifiers •
- Fixed Gas Detectors • Gas Detection Control Units •

## CONTENTS

1	DESCRIPTION .....	2
2	INSTALLATION .....	2
3	FINDING YOUR BLUETOOTH'S MAC ADDRESS .....	3
4	INPUTTING THE MAC ADDRESS INTO THE MENTOR REFRIGERANT IDENTIFIER ...	5
5	PAIRING THE MENTOR REFRIGERANT IDENTIFIER .....	7
6	USING THE MENTOR BLUETOOTH APPLICATION .....	9

# STATUS SCIENTIFIC CONTROLS

- Refrigerant Identifiers •
- Fixed Gas Detectors • Gas Detection Control Units •



## 1 DESCRIPTION

The Mentor Bluetooth Application is used as an alternative to the physical Bluetooth printer. The application will allow the user to send results data to the PC app to Save\Print how they wish.

## 2 INSTALLATION

This compatible with Windows 8.1 and Windows 10 operating Systems.

The file is in .zip format.

Extract the files to a suitable folder on your PC and then run the **Setup.msi** file. This will install the application on your PC and place a shortcut icon on the desktop as shown below.



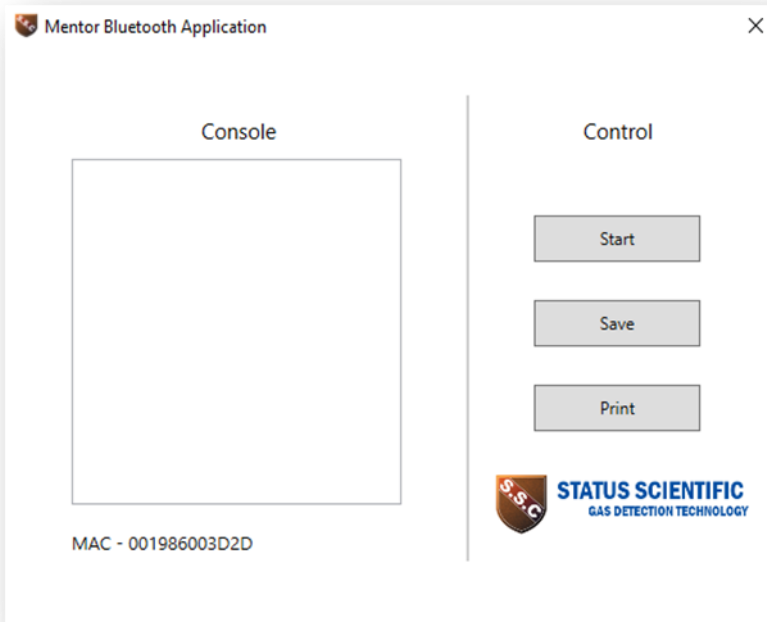
# STATUS SCIENTIFIC CONTROLS

- Refrigerant Identifiers •
- Fixed Gas Detectors • Gas Detection Control Units •



## 3 FINDING YOUR BLUETOOTH'S MAC ADDRESS

Once the application has installed and launched, the screen below will be shown:



Providing that the device has native hardware Bluetooth or a Bluetooth dongle, the application should display the MAC address of the Bluetooth transceiver.

If the device has no Bluetooth transceiver or it cannot be found, then the text "Not Found" will be displayed.



MAC - 001986003D2D



MAC - Not found

# STATUS SCIENTIFIC CONTROLS

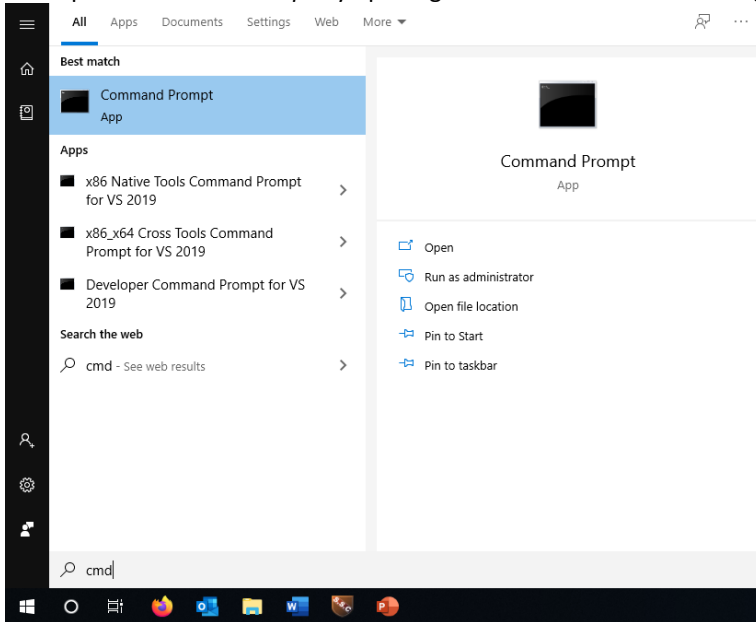


- Refrigerant Identifiers •
- Fixed Gas Detectors • Gas Detection Control Units •

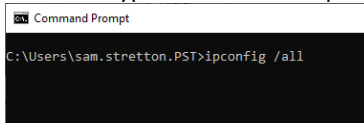
If “Not Found” is displayed you must first ensure that your computer has bluetooth capability. If you have bluetooth capability then follow this process to find it manually:

*Note: the following process is for Windows 10.*

1. Open *Command Prompt* by opening the start menu and searching for *cmd*



2. Now type the command *ipconfig /all*



# STATUS SCIENTIFIC CONTROLS



- Refrigerant Identifiers •
- Fixed Gas Detectors • Gas Detection Control Units •

3. After this information about your IP configuration will be displayed, find where it says “Ethernet adapter Bluetooth Network Connection:”

```
Ethernet adapter Bluetooth Network Connection:  
  
Media State . . . . . : Media disconnected  
Connection-specific DNS Suffix . . :  
Description . . . . . : Bluetooth Device (Personal Area Network)  
Physical Address. . . . . : 00-19-86-00-3D-2D  
DHCP Enabled. . . . . : Yes  
Autoconfiguration Enabled . . . . : Yes
```

Here your MAC address is displayed under the name “Physical Address”.

## 4 INPUTTING THE MAC ADDRESS INTO THE MENTOR REFRIGERANT IDENTIFIER

Once you have acquired your PC Bluetooth MAC address, you must input this into the Mentor Refrigerant Identifier.

1. Press *Menu* to enter the main menu.



# STATUS SCIENTIFIC CONTROLS

- Refrigerant Identifiers •
- Fixed Gas Detectors • Gas Detection Control Units •



2. Scroll down to page 2 and enter the *Printer* menu.



3. Set the printer to *ON*.



4. The option for *Printer MAC* should now be available on page 3 of the main menu.



5. Set the *Printer MAC* to the address found earlier.

# STATUS SCIENTIFIC CONTROLS

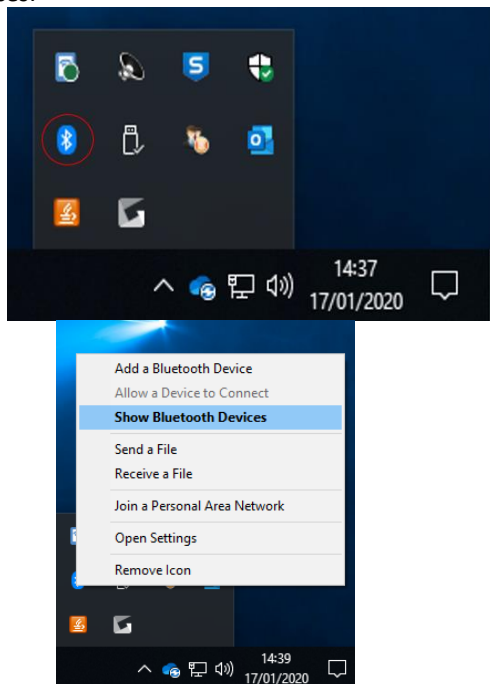
- Refrigerant Identifiers •
- Fixed Gas Detectors • Gas Detection Control Units •



## 5 PAIRING THE MENTOR REFRIGERANT IDENTIFIER

Once this is done. You must pair the Mentor Refrigerant Identifier with the PC. Please follow the steps given.

1. Right click on the Bluetooth logo in your system tray and click show Bluetooth devices.





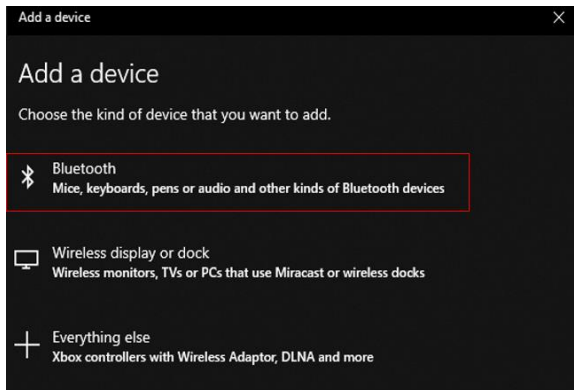
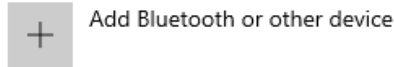
# STATUS SCIENTIFIC CONTROLS

- Refrigerant Identifiers •
- Fixed Gas Detectors • Gas Detection Control Units •

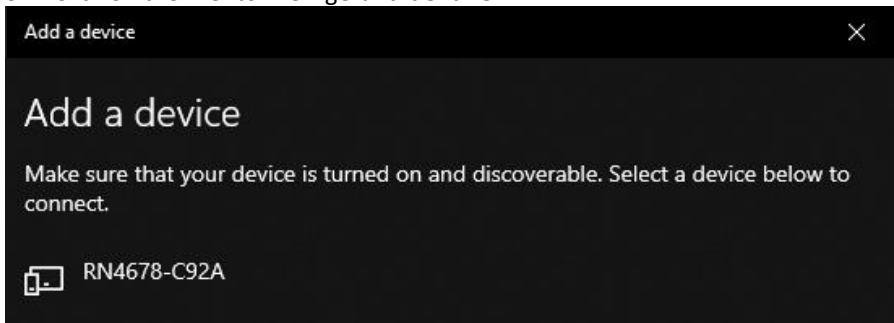


2. Click add Bluetooth or other Device, then click Bluetooth.

## Bluetooth & other devices



3. Click on the Mentor Refrigerant Identifier.



The Mentor will have a device ID in the format RNXXXX-XXXX.

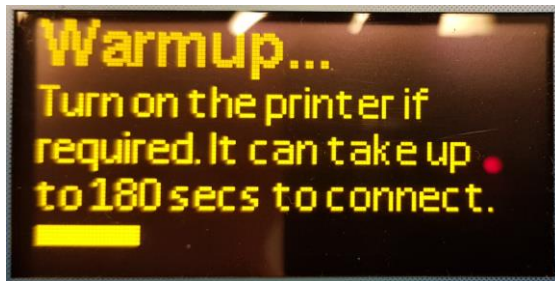
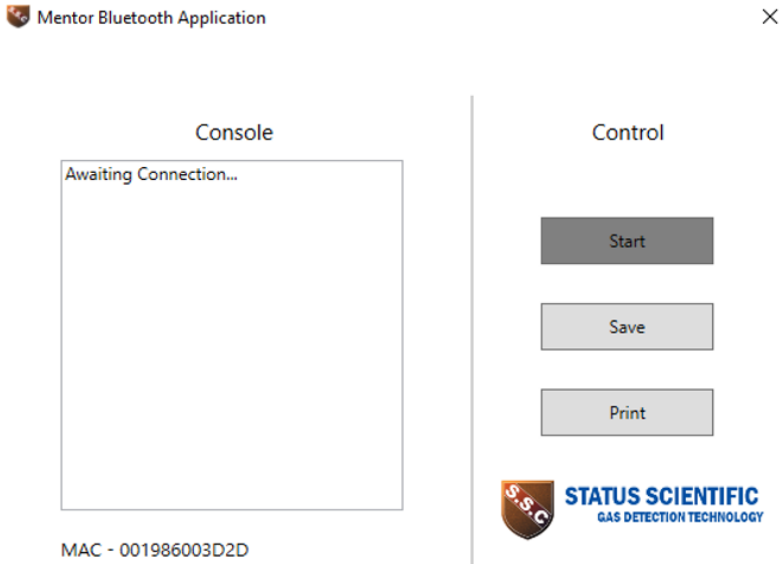
# STATUS SCIENTIFIC CONTROLS



- Refrigerant Identifiers •
- Fixed Gas Detectors • Gas Detection Control Units •

## 6 USING THE MENTOR BLUETOOTH APPLICATION

The Mentor Bluetooth Application is now setup. To use it turn the Mentor Refrigerant Identifier off and on, then press the start button during the Warmup.

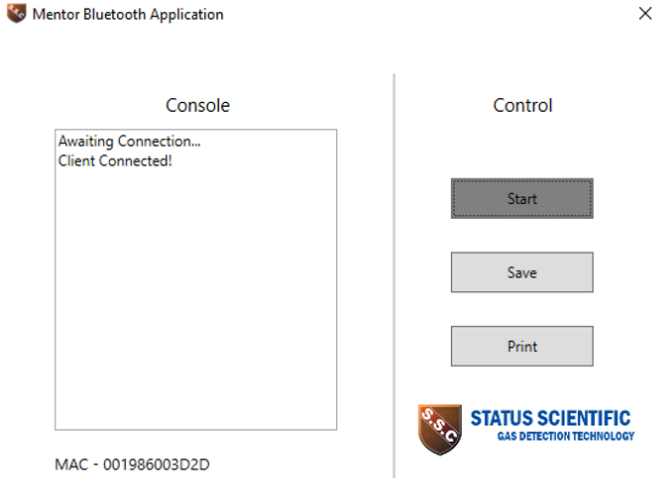


# STATUS SCIENTIFIC CONTROLS

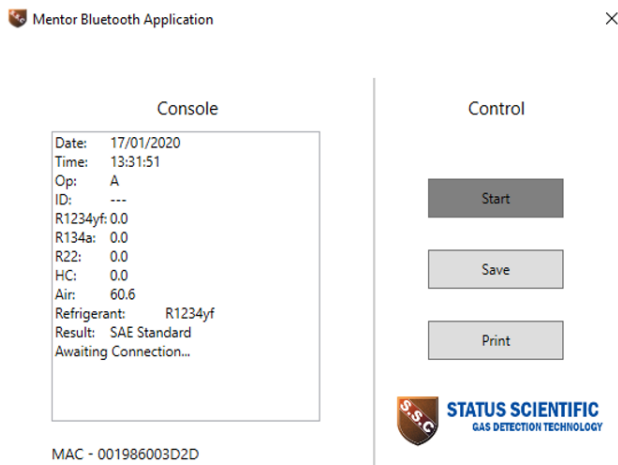


- Refrigerant Identifiers •
- Fixed Gas Detectors • Gas Detection Control Units •

About half way though the warmup phase “Client Connected!” Should appear on the console.



When the user prints a test result the results will appear like shown:



The user can now Save and Print using the control buttons on the right.